

KENWOOD

Quick Start Guide

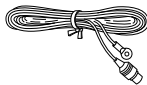
Compact Hi-Fi Component System

C-515BT / C-313

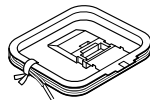
What's in the Box?

You should find these accessories upon opening the box.

FM indoor antenna



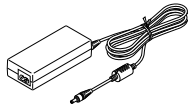
AM loop antenna



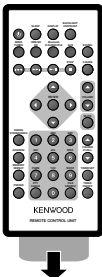
iPod Dock
(C-515BT only)



AC adapter
(AC-18335A x 1)



Remote control unit
RC-F0511E (C-515BT)
RC-F0510E (C-313)



Pull out the plastic protective sheet before use.

Power cord (For Europe)



Power cord (For Australia)



Follow the steps below to use your Compact Hi-Fi Component System

Connections



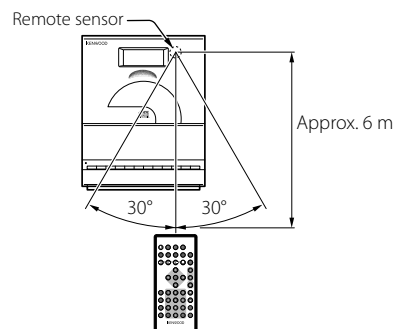
Setup



Operation

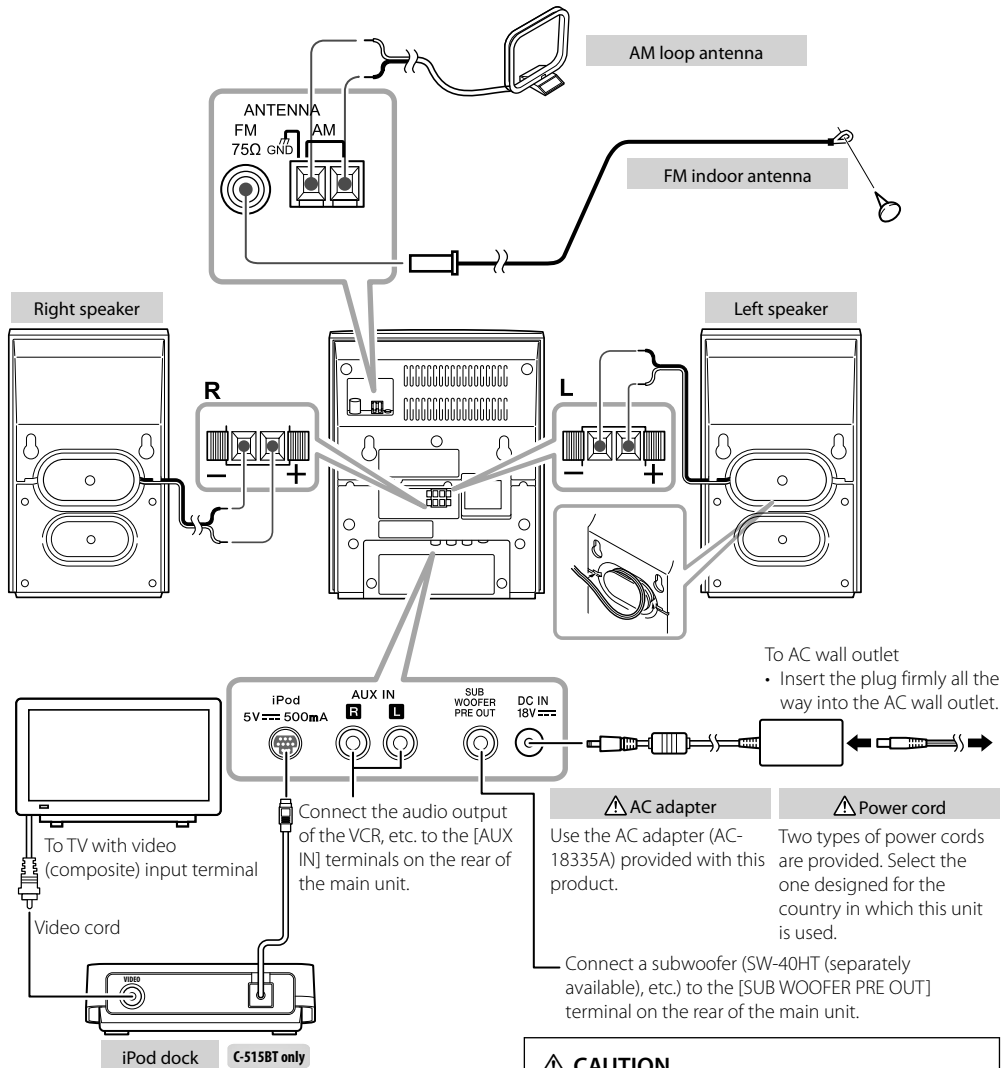
Remote control unit operation

Plug the power cord of the system to a power outlet and press [ON] on the remote control unit to turn the system ON. After the system is switched ON, press the desired operation button. Use the remote control unit by pointing it to the remote sensor on the main unit.



© B60-5809-08/00 (E, X)

Connections



CAUTION

The power in this equipment will not be completely cut off from the wall outlet when the standby switch is turned off. Install the equipment so that the wall outlet is easily accessible and, in case of emergency, immediately unplug the power plug from the wall outlet. Mains plug is used as the disconnect device, It shall remain readily operable and should not be obstructed during intended use.

CAUTION

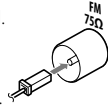
Be sure to adhere to the following, or proper ventilation will be blocked causing damage or fire hazard (Main unit and AC adapter).

- Do not place a cloth on the system or place it on a carpet or cushion.
- Do not use the system in a poorly ventilated place.
- Do not place any objects impairing heat radiation onto the top of the unit.
- Leave some space around the unit (from the largest outside dimension including projection) equal to or greater than, shown below.

Top panel : 50 cm

Connecting the FM antenna

- 1 Connect the lead to the [FM 75Ω] terminal.
- 2 Find the location that gives the best reception.
- 3 Secure the antenna as high up as possible.



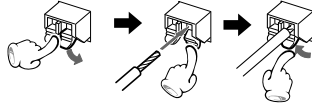
- The antenna supplied with the system is a basic antenna for indoor use. For stable signal reception, the use of an outdoor antenna (commercially available) is recommended. Disconnect the indoor antenna first before connecting an outdoor antenna.

⚠ CAUTION

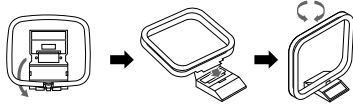
- Since antenna installation necessitates skill and experience, always consult your dealer before installation. The antenna should be placed at a distance from the power distribution wires. Otherwise, an electric shock accident may occur if the antenna falls down.

Connecting the AM antenna

- 1 Connect the AM antenna cord to the [AM] and [GND] terminals.



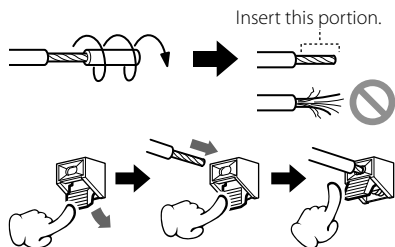
- 2 Setup the antenna in the position and the direction to be able to receive AM broadcast.



- The antenna supplied with the system is for indoor use. Place it as far away as possible from the system, your TV set, the speaker cords, AC adapter and the power cord, and point it in the direction that provides the best reception.

Connecting the speakers

- 1 Connect the right speaker to terminal marked "R", with the red wire to + and the black wire to -.
- 2 Connect the left speaker to terminal marked "L", with the red wire to + and the black wire to -.

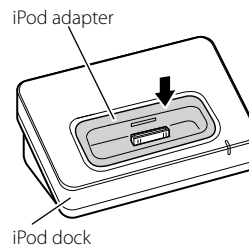


- For optimal sound performance, it is recommended to use the supplied speakers.
- Do not connect more than one speaker to any one pair of +/- speaker terminals.

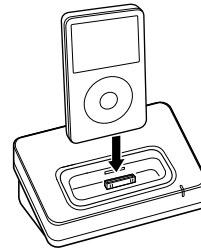
Connecting the iPod adapter C-515BT only

- Connect an iPod adapter, which is provided with your iPod or commercially available in iPod dealers, to the iPod dock of this unit. Note that the iPod adapter is not provided with this unit.

- 1 Insert the iPod adapter into unit.

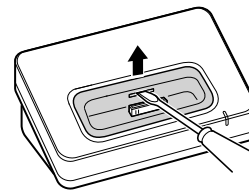


- 2 Connect your iPod.



To remove iPod adapter

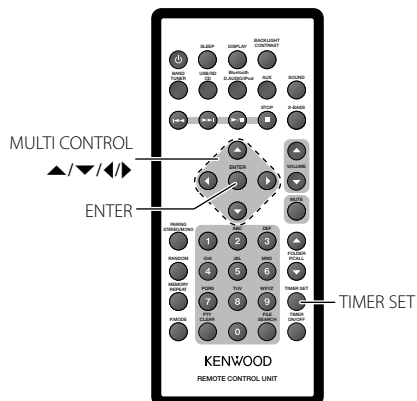
- Insert a thin object such as the tip of a flat-blade screwdriver into the slit on the dock adapter and lift it to remove.



Setup

Clock setting

The time of the day of the system can be set.



- 1 Press **TIMER SET** button.
- 2 Press **MULTI CONTROL** ◀ or ▶ button to select "CLOCK" and press **ENTER** button. "CLOCK SETTING" appears on the display.
- 3 Press **ENTER** button. The hour indication will start flashing.
- 4 Press **MULTI CONTROL** ▲ or ▼ button to set the hours and press **ENTER** button. The minute indication starts flashing.
- 5 Press **MULTI CONTROL** ▲ or ▼ button to set the minutes and press **ENTER** button. When the setting completes, "COMPLETE" is displayed and the unit exits the setup mode automatically.

- The clock setting will be erased when the power cord is disconnected or a power failure occurred.
- The **MULTI CONTROL** ◀ or ▶ button can be used to move across the setting items.

Operation

1 Switching the system on.

Press the **⏻** button.

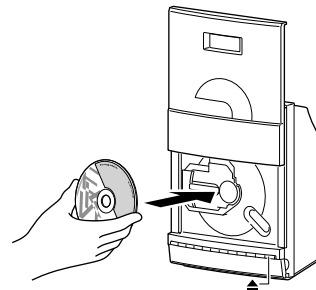
Turn the system ON (OFF). Pressing **⏻** button while the system is ON switches it OFF (standby mode).

2 Press the selector button once or more to select of the desired audio source.

- **TUNER BAND** button:
FM → AM
- **CD/USB/SD** button:
CD → USB → SD
- **D.AUDIO/iPod/Bluetooth** button:
D.AUDIO → Bluetooth* → iPod* (*C-515BT only)
- **AUX** button: AUX

CD

- 1 Press **▲** button to open the CD door.



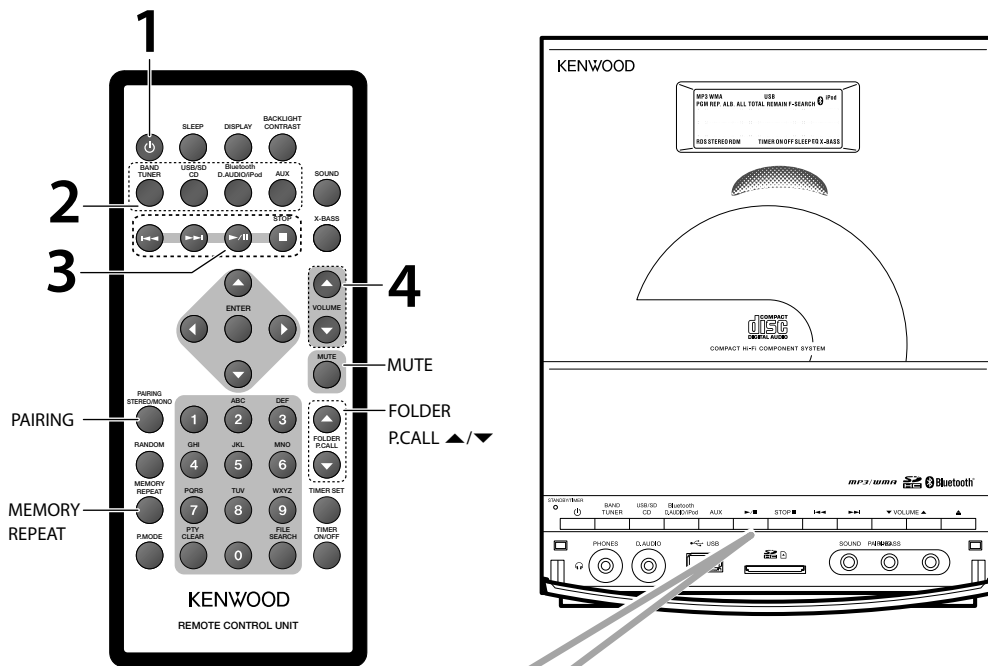
- 2 Insert a disc into the disc loader with the label side is facing you.

- 3 Press **▲** button to close the CD door.

For a CD, the total playtime and total number of tracks will appear in the display.
For an audio file-CD, the total album number and total file number will appear on the display.

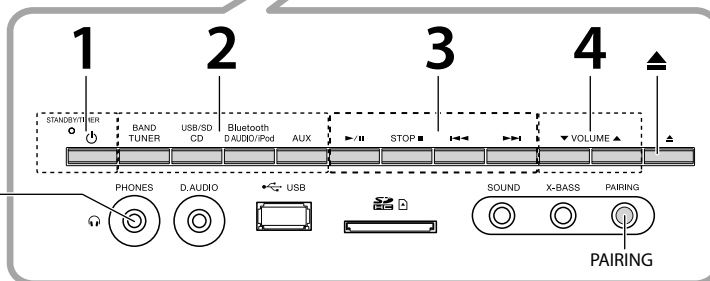
AUX (external component)

An external component can be connected to AUX IN of this unit and played back.



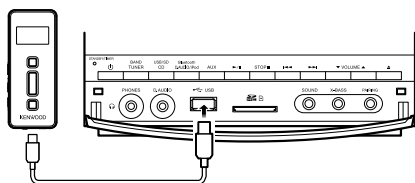
Headphones

To listen to your stereo with headphones (separately available), use the 3.5 mm phones jack on the main unit. Connecting headphones mutes the sound from the speakers.



USB device

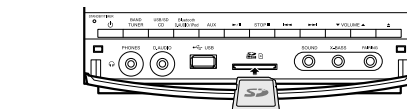
Insert a USB device to the USB connector on the front panel.



"USB" is displayed. The total album number and total file number will appear on the display.

SD card

Insert the SD card into the SD card slot until it clicks.



Insert the SD card so that the label side faces up and the side with a cut comes on the right.

The total album number and total file number will appear on the display.

RADIO

Auto preset radio station

Radio stations can be preset automatically in preset channels.

- 1 Press **TUNER BAND** button to select the desired waveband: **FM** or **AM**.
- 2 Press **MEMORY/REPEAT** button for more than 2 seconds.
The receivable radio stations are preset automatically. When the Auto preset operation has completed, the unit enters the condition in which preset station P01 is tuned.

Tuning to a preset radio station

Press **FOLDER/P.CALL** ▲ or ▼ button.

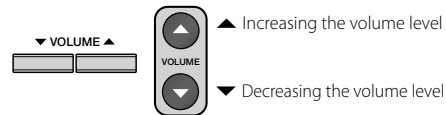
3 Start playback.

Press ►/|| button.

To stop playback of CD/USB device/
SD card/D.AUDIO...
Press **STOP** ■ button.

To select a track/ file/ song...
Press |◀◀ or ▶▶| button.

4 Adjust using VOLUME.



Muting the sound temporarily...
Press **MUTE** button.

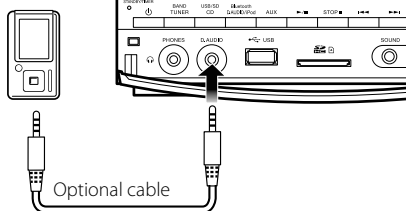
To cancel muting...
Press **MUTE** button again (this resumes
the original volume) or adjust the volume.

D.AUDIO

Playback of Digital Audio Player

Kenwood digital audio player can be connected to play audio files in it.

Kenwood digital
audio player



- 1 Connect an the player.
- 2 Turn the connected player ON and start playing it.

Removing a disc

- 1 Press ▲ button and carefully pull it out.
- 2 Press ▲ button to close the CD door.

Removing the USB device/SD card/D.AUDIO/ iPod

- 1 Press the ⏻ button to select standby mode.
- 2 Remove the USB device/SD card/D.AUDIO/
iPod.

iPod C-515BT only

Connect a iPod to the iPod dock.

Bluetooth audio C-515BT only

Press **PAIRING** button.

You can listen to audio files stored in Bluetooth audio player. For more information, refer to the supplied Instruction manuals.

Standby mode

While the STANDBY/TIMER indicator is lit, a small amount of power is supplied to the system to back up the memory. This is called standby mode. Under the condition, the system can be turned ON by the remote control unit.