

Installation Manual Double DIN Kit CAW 2320-19 / CAW 2320-19-RT

KENWOOD

Installation Manual Double DIN Kit

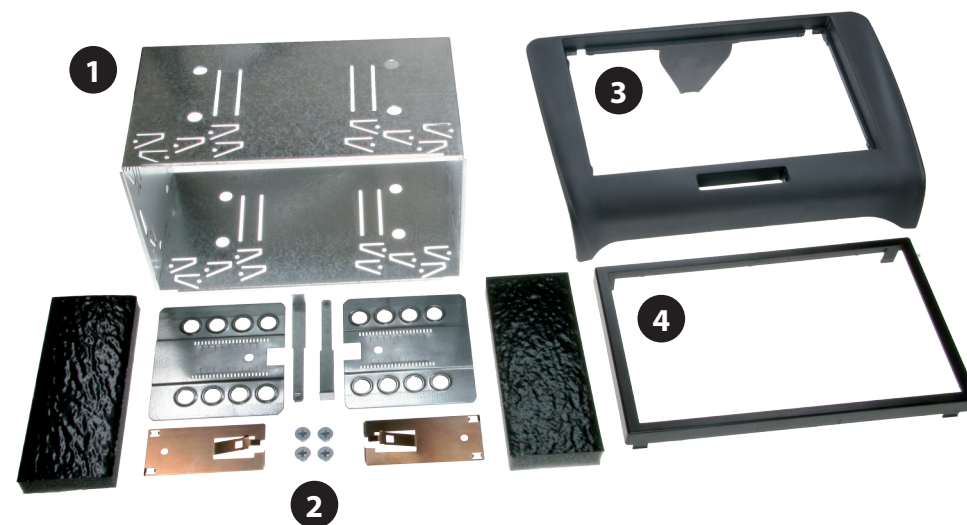
Standard: CAW 2320-19

Rubber-Touch: CAW 2320-19-RT

• Audi TT (8J) 2006 →

Compatible with these Kenwood double DIN devices

Kenwood Navigation



Double DIN Set contents

- (1) Metal Frame
- (2) Installation Kit
- (3) Facia Plate
- (4) Trim Frame

Installation Manual Double DIN Kit CAW 2320-19 / CAW 2320-19-RT



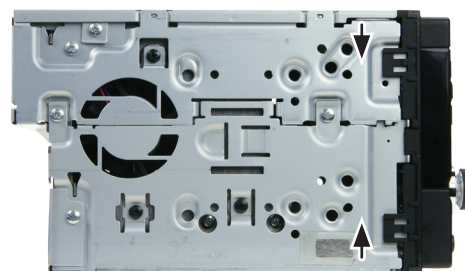
1. Put four radio release keys in the appropriate slots of the OEM radio



2. Remove the OEM head unit by pulling it towards your direction.
3. Place the mounting frame on the dashboard.

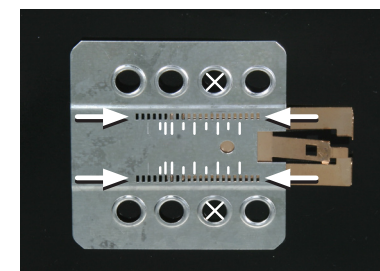
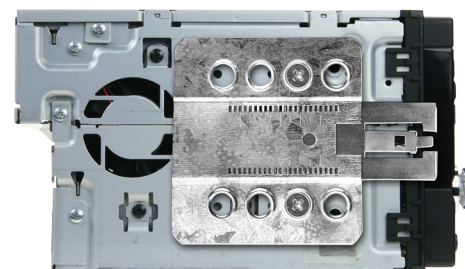


4. Fix the mounting frame with two screws (see arrows)
- Push the Metal Frame into the mounting frame



(sample photo)

Mount the metal brackets with the double DIN head unit



(sample photo)

The position of the copper coloured holder can be adjusted to your needs for perfect fit. (see sample)

5. Push the Metal Frame into the fascia plate, place both into the dashboard.

Connect all required circuit points and push the double DIN head unit in the metal frame until it snaps in. Fix the fascia plate with the original screws, place the trim frame.

Reinstall everything in reverse order to finish installation.

*All installation work must be performed by a qualified professional installer only.
The manufacturer / dealer is not liable for any kind of incidental or indirect damages.*