

NEXEDGE®

KAS-10 v4.0

GPS AVL & Dispatch Messaging Software
NEXEDGE® Virtual Radio IP Dispatch

NXDN®

FleetSync®

5-tone

General Features

- 999 Mobile ID Capacity
- FleetSync® or NEXEDGE® Messaging & AVL
- Analogue Conventional & LTR® Operation
- NEXEDGE® Conventional & Trunked (Single / Multi-Site) Operation
- Imported JPEG, BMP, GIF, EMF or WMF Image Maps
- Microsoft® MapPoint® 2013 North America and Europe Maps Compatible
- Google Earth™ Maps (KMF Output)

General Dispatch Features

- Stun / Remote Kill / Emergency / Man-Down
- Text Messages
- 20 Pre-defined Text Message List
- Status Message Request
- Horn Alert
- Lone Worker (FleetSync® & NEXEDGE®)

Analogue Dispatch Messaging

- Voice Call (FleetSync®): Individual, Fleet, Group, Broadcast, Supervisor
- Voice Call (5-tone): Individual, Group, Broadcast
- 85 (5-tone) / 70 (FleetSync®) Custom Status Messages

NEXEDGE® Digital Messaging

- Voice Call (NXDN®): Individual, Group, Broadcast
- 207 Custom Status Messages
- Remote Monitor & Remote Re-Grouping

NEXEDGE® IP Network Operation

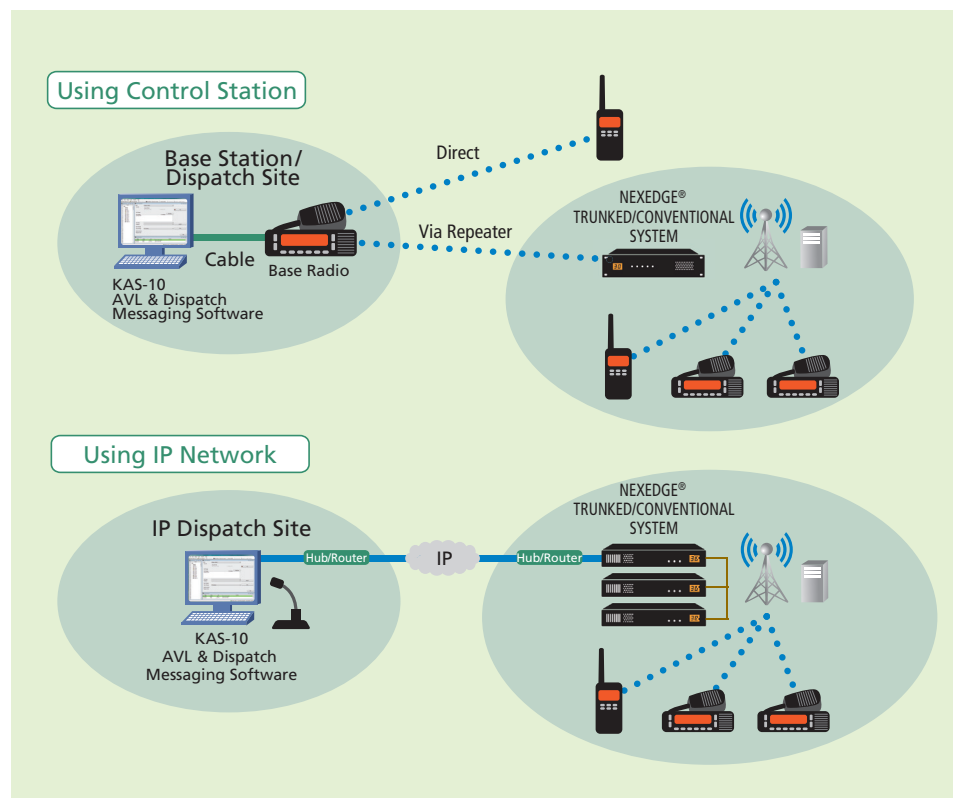
- AVL & Dispatch Operation Over IP
- Up to 10 KAS-10 per Trunked Site
- Up to 100 KAS-10 per Trunked Network
- Digital Voice Systems, Inc. USB-3000™ AMBE+2™ (required)
- 100 Group Scan with 4 Priority Monitor ID's
- NXDN® Voice Scrambling
- Conventional IP Operation is available (see footnote on the back)

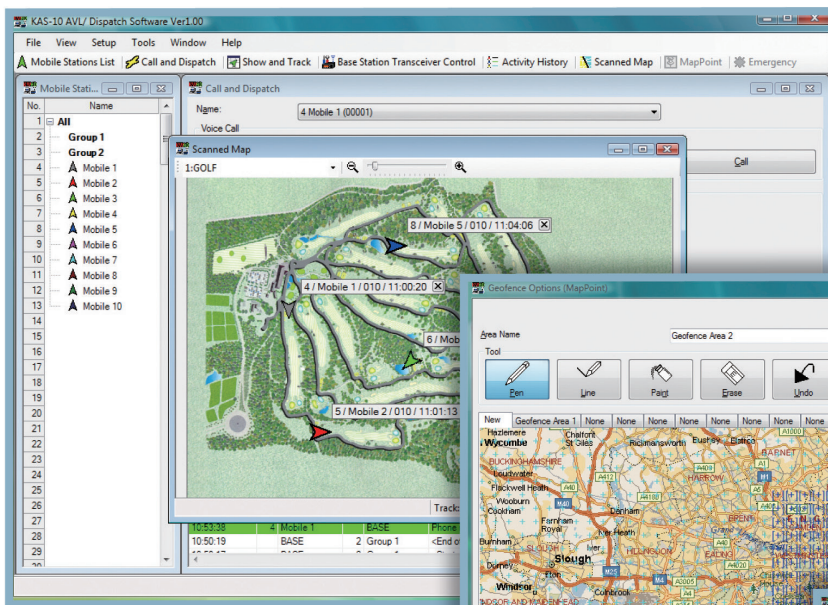
Operators Graphical Interface

- Independent Dispatch & AVL Screens
- Integrated Call Operation Window
- 20 Mobile, 30 Status & Emergency Icons
- Mobile Icon Tags (name, unit, status message, time, speed, GPS status)
- Emergency Panel Alerts
- View & Track Selected or All Mobiles
- Alphanumeric Text Message Send / Receive Display
- Send Voice Call
- PTT Momentary / Lock Control
- Send Position Request
- Find Location Feature (address, place/data, LAT & LONG)

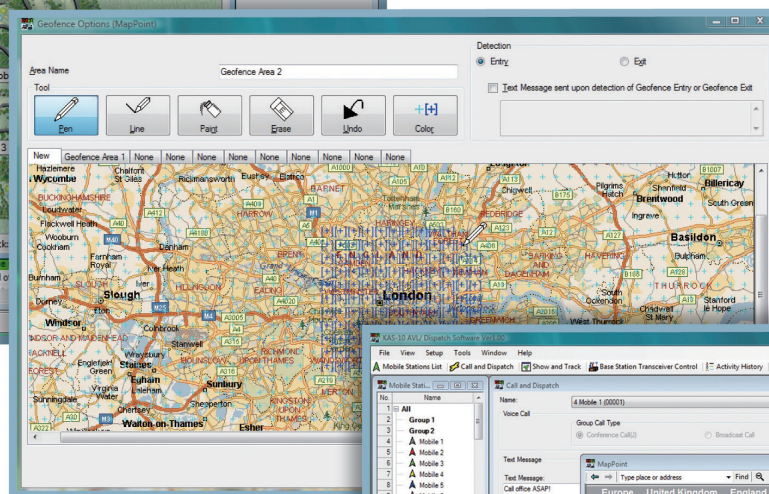
Administrative Assistant

- Administrator Password Protection Setup
- Auto Polling / Auto Reporting
- Speed Restrictions Warning
- Geofence – Alert System for Area Management
- Historical Logging & File Playback
- Emergency & Man-Down Log File Review
- WAV File Import for Warning and New Messages
- In Coming / Out Going Voice Record & Play
- Sent Message Queue

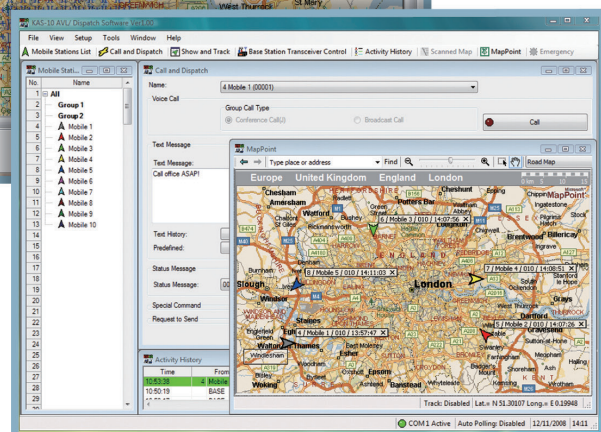




AVL (Scanned Map) Screen



Geofence Screen



AVL Dispatch

Base / Control Station Requirements

- Compatible Kenwood Radio with 5-tone or FleetSync® or NEXEDGE® Signalling & Messaging
- PC Serial Interface Cable*
- Optional KMC-9B/9C/53 Desktop Base Microphone for Mobile Radio

Fleet Radio Requirements

- Compatible Kenwood Mobile or Portable Radios
- Internal or External GPS with Antenna* (mobile)
- GPS Speaker Microphone* (portable)

Specifications are subject to change without notice, due to advancements in technology. LTR® is a registered trademark of Transcript International. Microsoft®, Windows®, Windows Vista® and MapPoint® are trademarks of Microsoft Corporation in the U.S. and other countries. Intel® and Pentium® are trademarks of Intel Corporation in the U.S. and other countries. USB-3000™ and AMBE+2™ are trademarks of Digital Voice Systems, Inc. Google Earth™ is a trademark of Google, Inc. NEXEDGE® is a registered trademark of JVC KENWOOD Corporation. NXDN® is a registered trademark of JVC KENWOOD Corporation and Icom Inc. FleetSync® is a registered trademark of JVC KENWOOD Corporation.

Footnote

- Conventional IP Operation:
Up to 10 KAS-10 per NXR-700/800/900/901 repeaters (required firmware Ver4.0 or later)
Up to 2 KAS-10 per NXR-710/810 (with KTI-3) repeaters (required firmware Ver2.0 or later)

PC Software / Hardware Requirements

- Microsoft® Windows® XP / Windows Vista® / Windows® 7 (32/64 bit) / Windows® 8 (32/64 bit) Operating System
- Intel® Pentium® III 1GHz (minimum) / Intel® Pentium® 4 2GHz or higher (recommended), Intel® Pentium® 4 3GHz or higher (required for IP Network Operation)
- 256MB (minimum) or 512MB and more (recommended) Memory, 100MB HDD Free Space, CD-ROM, DVD-ROM, Serial Port, XGA (1024 x 768)
- Digital Voice Systems, Inc USB-3000™ AMBE+2™ Vocoder* for IP Network Operation
- External PC Microphone* and Speaker* Required for IP Network Operation
- Microsoft® MapPoint® 2006 / 2009 / 2010 / 2011 / 2013 Software* or Imported Maps

* Purchase separately

JVC KENWOOD Corporation

Communications Equipment Division

1-16-2 Hakusan, Midori-ku, Yokohama-shi, Kanagawa, 226-8525 Japan

www.jvckenwood.co.jp/en



ISO9001 Registered
Professional Systems Business Group
JVC KENWOOD Corporation

CL773KM-E-2