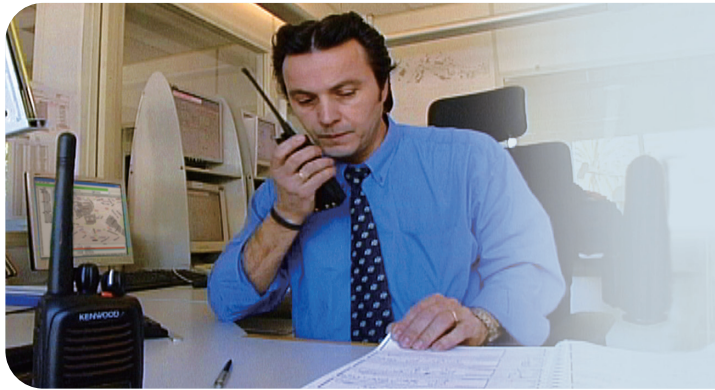


KENWOOD

Listen to the Future



KGS-3

FleetSync® AVL & Dispatch Messaging Software

FleetSync®
BY KENWOOD

General

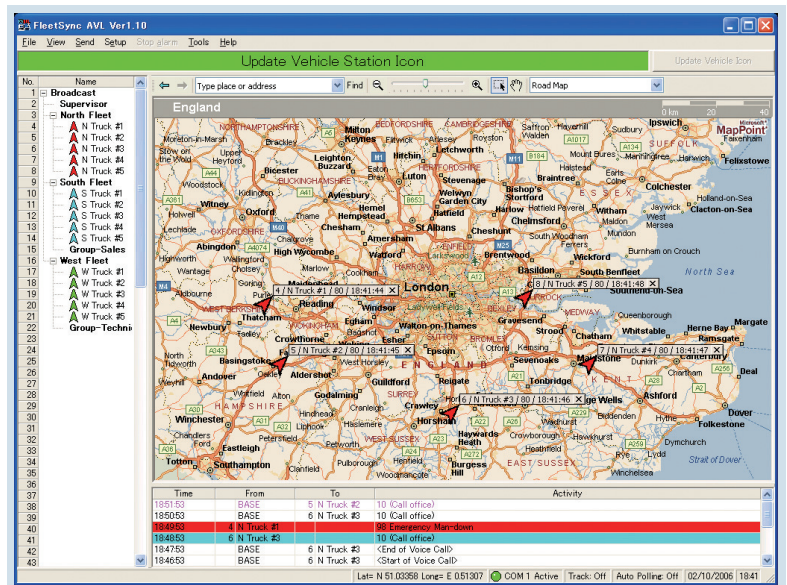
- FleetSync® GPS AVL Data Compatible
- 100 Vehicle Tracking Capacity*¹
- Microsoft® MapPoint® 2004 or 2006*² Mapping (purchase separately)*³

Windows® OS Graphical Interface

- 20 Coloured Vehicle Icons
- 30 Status Icons & Emergency Icon
- Screen View & Navigation Functions
- Quick Access
- Vehicle Station Tree View List
- Vehicle Icon Tags (name, unit, status, time)
- Activity History Grid with Colour-Coded Call Indications
- Emergency Screen Alerts
- Selected Vehicles can be Viewed or Tracked

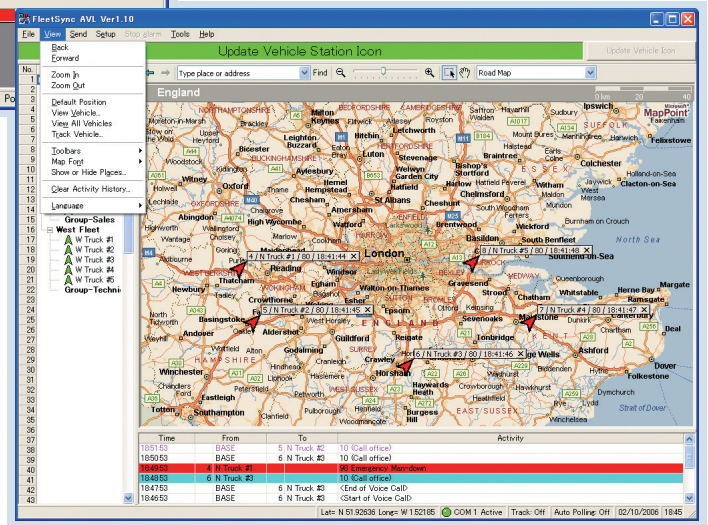
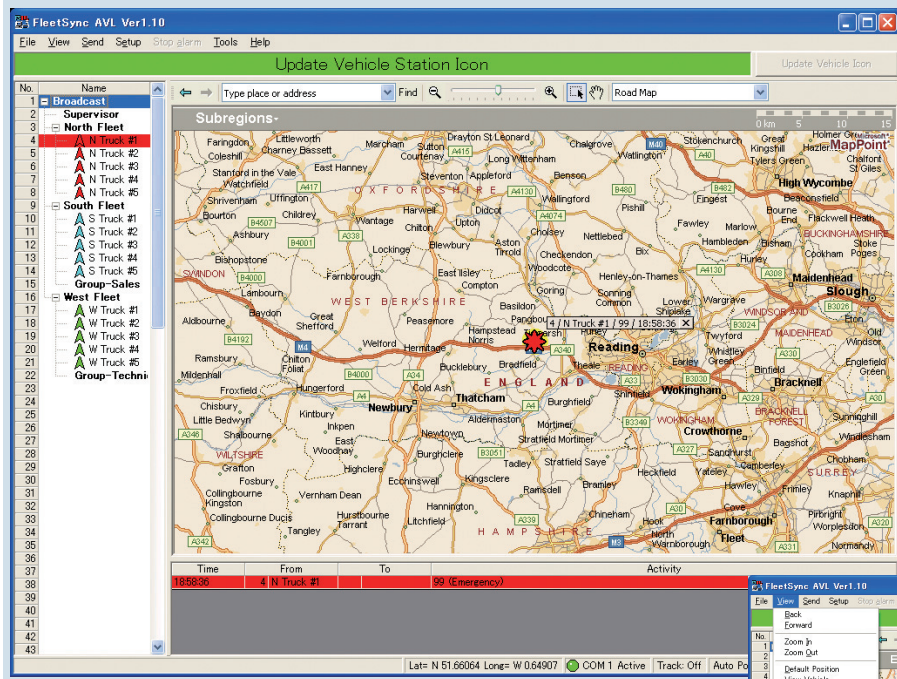
Administrative Features

- Administrator Setup Password Protected
- Auto Polling (base to mobiles)
- Auto Reporting per Mobile Programming
- Historical Logging & File Playback (position, voice, messages, status)
- Emergency & Man-Down Log File Review
- WAV File Import for Emergency and New Messages
- Default Position



FleetSync® Dispatch Signalling & Messaging

- Call Activity Window
- Call Types: Individual, Fleet, Group, Broadcast, Supervisory
- 70 Custom Status Messages (25 alphanumeric characters)
- Emergency
- Stun / Remote Kill
- Horn Alert
- Free Form 48-Character Alphanumeric Text Messages
- 20 Pre-defined 48-Character Alphanumeric Text Messages



Compatibility

- 180-Series Mobile Configured as Base Station
- Mobile Targets: 180 / 160 / 80-Series Mobiles with NMEA GPS Unit Installed for FleetSync® AVL
- Portable Targets: KMC-38GPS Speaker Microphone Compatible Models*4
- Conventional Operation Only

Minimum Hardware/Software Requirements

- Microsoft® MapPoint® 2004 or 2006*2 Software (purchase separately)
- 180-Series Mobile Base Station (for computer running FleetSync® AVL application)*5
- 180-Series Mobile Serial Interface Cable (purchase separately)
- Base Computer: Pentium III 1GHz, 256MB, 20MB HDD, CD ROM Drive, Serial Port, XGA (1024 x 768); Microsoft® Windows® 2000 Professional (SP4 or later); XP Professional (SP1a or later)

*1 100 Vehicle Tracking: Practical fleet size may vary depending on system type, system loading, vehicle poll/report rates, mixed voice/data or dedicated data channel usage.

*2 KGS-3 compatibility with the European version of Microsoft® MapPoint® 2006 will be incorporated in a future upgrade.

*3 Microsoft® MapPoint® 2004/2006 maps only; custom maps cannot be imported. Microsoft® & MapPoint® are registered trademarks of Microsoft Corporation U.S.A.

*4 Refer to KMC-38GPS user manuals for compatible models.

*5 Supports single base station operation only. KGS-3 does not support single or multi-operator positions via IP-networks.

Kenwood follows a policy of continuous advancement in development. For this reason specifications may be changed without notice. FleetSync® is a registered trademark of Kenwood Corporation. Windows® is a registered trademark of Microsoft Corporation in the United States and other countries.

Listen to the Future

Kenwood has always connected with people through sound. Now we want to expand the world of sound in ways that only Kenwood can, listening to our customers and to the pulse of the coming age as we head toward a future of shared discovery, inspiration and enjoyment.

Kenwood Electronics U.K. Ltd.

Kenwood House, Dwight Road, Watford, Herts, WD18 9EB, United Kingdom

